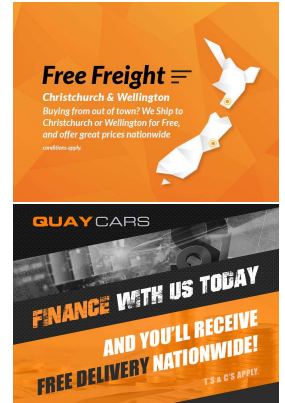
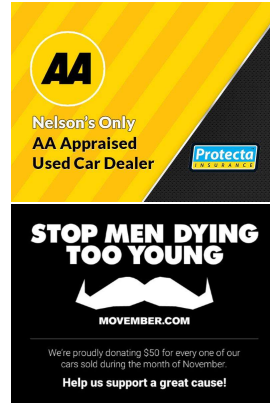


# 2006 Suzuki Swift



## VEHICLE INFORMATION

### Cash Price

Includes GST,  
Registration &  
Licensing

**\$7,995**

Finance this vehicle  
from only

**\$60.26**

per week\*

Total Amount Payable

\$10,199.80

finance  
**NOW**



Gain peace of mind  
with Mechanical  
Breakdown Insurance.  
Ask us how.

### Body

5 door, Hatchback

### Odometer

156,700 km

### Engine

1300 cc

### Fuel Type

Petrol

### Transmission

4-Speed Auto, Front Wheel

### Wheels

15", Hubcap

### VIN

-

### Reg No.

JYP717

### Ext Colour

Burnt Orange

### History

Ex-Overseas

### Seats

5 seats, Fabric

### Interior

Black, Cloth

### Audio

CD Player

### Stock ID

2168

### Exterior Features

- » Car Alarm
- » Central Locking
- » Electric Mirrors
- » Key-Less Entry
- » Power Steering

### Interior Features

- » Air Conditioning
- » All Electrics
- » Central Locking
- » Clock
- » Dual Air Bags
- » Hi Spec Interior

### Mechanical Features

- » AA Appraised
- » ABS Braking
- » Timing Chain

**QUAY CARS**

Quay Cars, Phone 03 539 0053, Email [ryan@quaycars.co.nz](mailto:ryan@quaycars.co.nz)  
183 Haven Road, Beachville, Nelson 7010, New Zealand  
[www.quaycars.co.nz](http://www.quaycars.co.nz)

\* Finance calculation based on a 36 month term, 10% deposit and with an example annual fixed interest rate of 13.95%. Actual interest rate may be higher or lower. Includes an establishment fee of \$450.00. Full term total amount payable of \$10,199.80. Estimate only, not an offer of finance. Terms, conditions and lending criteria apply.