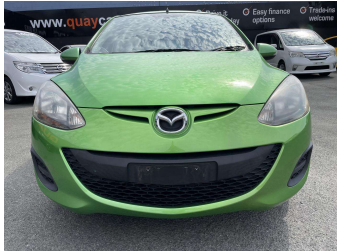


2012 Mazda Demio 13 SKYACTIVE



Purchase Price

\$7,999

Includes GST
Excludes on-road costs of \$495

Indicative repayments

\$63.80 per week*

Based on a 36 month term & 10% deposit.
Total repayments (156) = **\$10,801.88**



Gain peace of mind with
Mechanical Breakdown
Insurance. **Ask us how.**



Top features

- » ABS Braking
- » Air Conditioning
- » All Electrics
- » Central Locking
- » Central Locking
- » Climate Control
- » Clock
- » Dual Air Bags
- » Electric Mirrors
- » Electronic Stability C...
- » Key-Less Entry
- » Power Steering
- » Timing Chain

Body Style

5 door, Hatchback

Odometer

117,000 km

Engine

1300 cc

Fuel Type

Petrol

Transmission

Automatic, Front Wheel

Wheels

15", Factory Alloys

VIN

-

Interior

Black, Cloth

Safety



Based on 2023 UCSR rating
for 07-14 models

Reg No.

-

Ext Colour

Green

History

Ex-Overseas

Seats

5 seats, Fabric

CO2 Emissions

★★★★☆

118 grams/km

Energy Economy

★★★★☆☆

Annual fuel cost of \$1,920
4.9L per 100km

Cost per year is an estimate based
on petrol price of \$2.80 per litre and
an average distance of 14000 km.
Emissions and Energy Economy
figures standardised to 3P WLTP.



Scan this QR code
for more info
Stock ID: 5650

QUAYCARS

Quay Cars | Phone 03 539 0053 | Email ryan@quaycars.co.nz
9 Salisbury Road, Richmond, Richmond 7020, New Zealand
www.quaycars.co.nz

* Quay Cars is not a lender nor a financial adviser. Any amounts displayed should not be seen as an offer of finance or taken as financial advice. The interest rate, fees and loan term used in this calculation may not actually represent those available from lenders. Actual interest rates, fees and loan terms will vary per lender and are typically based on an assessment of your credit risk and responsible lending criteria. Any repayment amounts displayed are indicative only and have been calculated using several other indicative inputs. The interest rate used in this calculation is an arbitrary 13.95%, however exact interest rates vary per lender. The term of the loan used in this calculation is 36 months. Exact terms available vary per lender although options typically include 6, 12, 18, 24, 36, 48 and 60 months. This calculation also includes a typical mandatory fee charged by lenders. This is a one-off establishment fee of \$450.00. Typically, this fee can be paid upfront or, as in this calculation, be capitalised over the contract term, ie. included in the loan amount. This fee can vary per lender and other non-mandatory fees and charges may also apply. The total amount of repayments has been calculated by multiplying 156 weekly repayments (based on a 36 month term) by the weekly repayment amount of \$63.80 which equals \$10,801.88. This calculator does not consider any of your own personal circumstances and we strongly suggest you seek budgeting advice prior to committing to any loan contract. Responsible lending criteria and lender terms and conditions will likely apply to any finalised loan contract. Proof of security and/or vehicle insurance may also be required before proceeding.