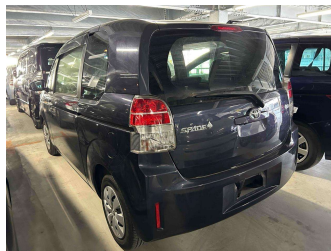


2013 Toyota SPADE X




Purchase Price **\$7,999**

Includes GST
Excludes on-road costs of \$495

Indicative repayments

\$63.80 per week*

Based on a 36 month term & 10% deposit.
Total repayments (156) = **\$10,801.88**



Gain peace of mind with
Mechanical Breakdown Insurance. Ask us how.



an ASSURANT company

Top features

- » ABS Braking
- » Air Conditioning
- » All Electrics
- » Central Locking
- » Central Locking
- » Dual Air Bags
- » Electric Mirrors
- » Key-Less Entry
- » Power Steering

Body Style
4 door, Hatchback

Odometer
84,000 km

Engine
1300 cc

Fuel Type
Petrol

Transmission
Automatic, Front Wheel

Wheels
14", Hubcap

VIN
-

Interior
Brown, Cloth

Safety
-

Reg No.
-

Ext Colour
Purple

History
Ex-Overseas

Seats
5 seats, Fabric

CO2 Emissions
-

Energy Economy
-



Scan this QR code
for more info
Stock ID: 5805



Quay Cars | Phone 03 539 0053 | Email ryan@quaycars.co.nz
9 Salisbury Road, Richmond, Richmond 7020, New Zealand
www.quaycars.co.nz

* Quay Cars is not a lender nor a financial adviser. Any amounts displayed should not be seen as an offer of finance or taken as financial advice. The interest rate, fees and loan term used in this calculation may not actually represent those available from lenders. Actual interest rates, fees and loan terms will vary per lender and are typically based on an assessment of your credit risk and responsible lending criteria. Any repayment amounts displayed are indicative only and have been calculated using several other indicative inputs. The interest rate used in this calculation is an arbitrary 13.95%, however exact interest rates vary per lender. The term of the loan used in this calculation is 36 months. Exact terms available vary per lender although options typically include 6, 12, 18, 24, 36, 48 and 60 months. This calculation also includes a typical mandatory fee charged by lenders. This is a one-off establishment fee of \$450.00. Typically, this fee can be paid upfront or, as in this calculation, be capitalised over the contract term, ie. included in the loan amount. This fee can vary per lender and other non-mandatory fees and charges may also apply. The total amount of repayments has been calculated by multiplying 156 weekly repayments (based on a 36 month term) by the weekly repayment amount of \$63.80 which equals \$10,801.88. This calculator does not consider any of your own personal circumstances and we strongly suggest you seek budgeting advice prior to committing to any loan contract. Responsible lending criteria and lender terms and conditions will likely apply to any finalised loan contract. Proof of security and/or vehicle insurance may also be required before proceeding.